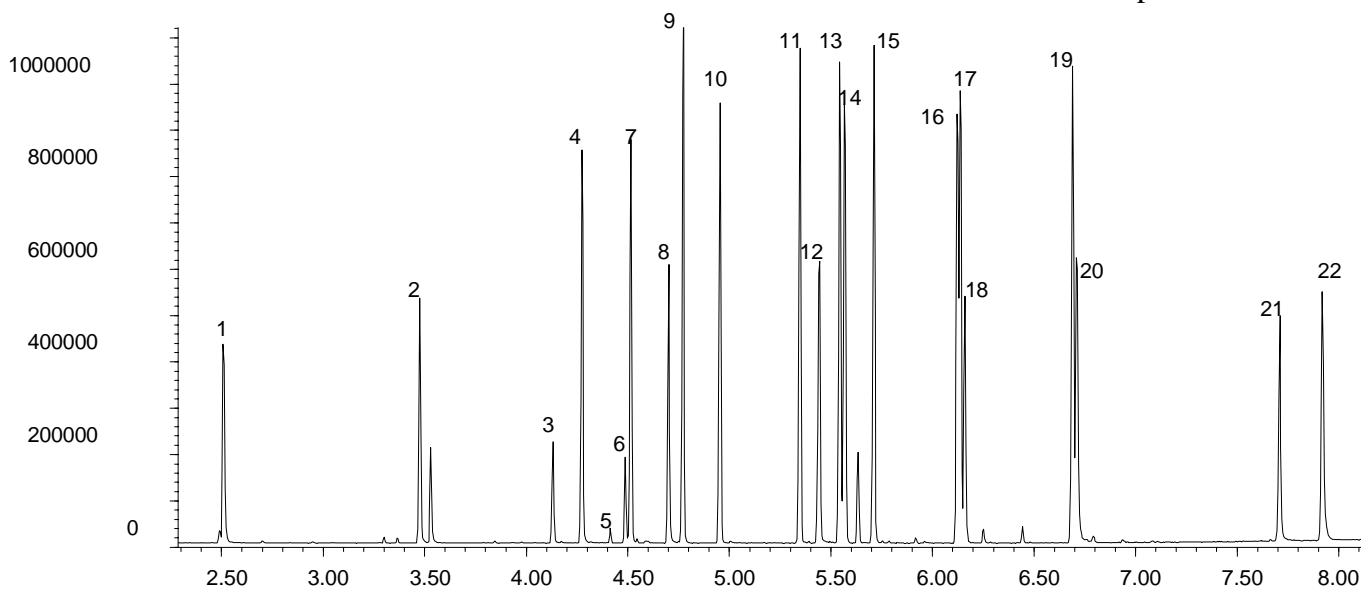


**Phase:** BPX35, 0.1µm film  
**Sample:** 200ppm in dichloromethane  
**Column:** 10m x 0.1 mm ID  
**Initial Temp:** 110°C, 1 min.  
**Rate 1:** 30°C/min to 320°C,  
**Final Temp:** 320°C, 5 min.  
**Detector Type:** MSD  
**Carrier Gas:** He, 50.3 psi  
**Carrier Gas Flow:** 0.4 mL/min.  
**Constant Flow:** On  
**Average Linear Velocity:** 35 cm/sec at 110°C  
**Injection Mode:** Split  
**Split Ratio:** 100:1.  
**Injection Volume:** 1 µL  
**Injection Temperature:** 250°C  
**Autosampler:** No  
**Liner Type:** 4 mm ID Double Taper Liner  
**Liner Part Number:** 092018  
**Column Part Number:** 054699  
**ms-NoVent™ Part no.:** 113400  
**HP5973 restrictor:** 113409  
**Full Scan / SIM:** Full scan 45-450

### Components

1. Dichlorvos
2. α-Mevinphos
3. Demeton-S
4. Ethoprop
5. Sulfotepp
6. Naled
7. Phorate
8. Demeton-O
9. Diazinon
10. Disulfoton
11. Ronnel
12. Methyl parathion
13. Chlorpyrifos
14. Trichloronate
15. Fenthion
16. Tetrachlorvinphos
17. Tokuthion
18. Merphos
19. Bolstar
20. Fensulfothion
21. Guthion
22. Coumaphos



visit [www.sge.com](http://www.sge.com) or contact our technical Customer Support Team on: [techsupport@sge.com](mailto:techsupport@sge.com)

SGE International Pty. Ltd.  
email: support@sge.com

SGE Incorporated (USA)  
email: usa@sge.com

SGE (France) Sarl  
email: france@sge.com

SGE Deutschland GmbH  
email: germany@sge.com

SGE Japan Inc.  
email: sgejpn@itjit.ne.jp

SGE Australia Pty. Ltd.  
email: sales@sge.com

SGE Europe Ltd. (UK)  
email: uk@sge.com

SGE (Italia) Srl.  
email: sge.italia@tin.it

SGE China Service Centre  
email: sge@bj.col.com.cn

SGE India  
email: sgeindia@bom4.vsnl.net.in

