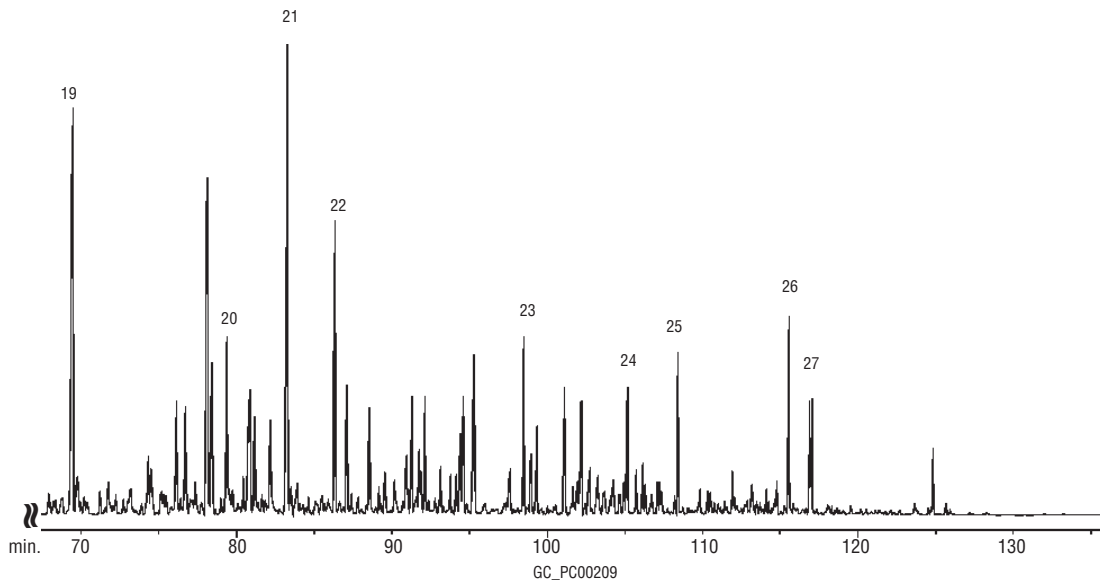
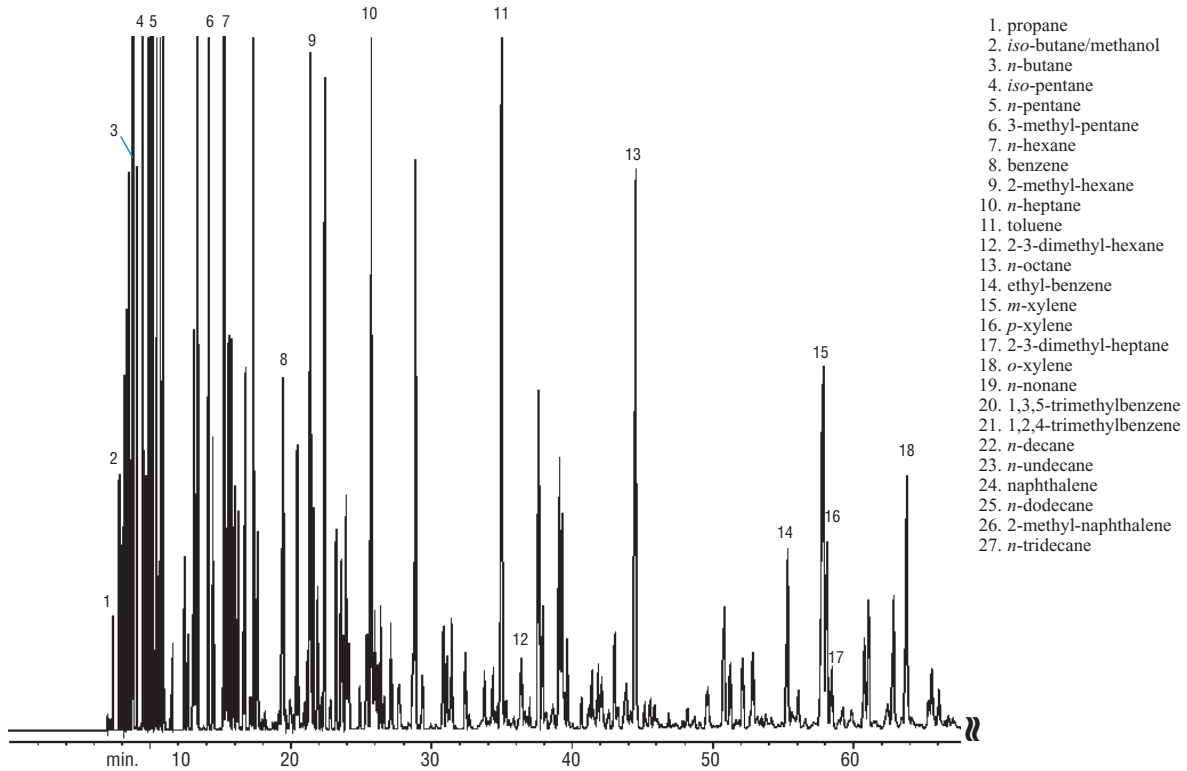


Detailed Hydrocarbon Analysis

Reformulated Gasoline

Rtx®-1 PONA

(split injection)



100m, 0.25mm ID, 0.50µm Rtx®-1PONA (cat.# 10195)
 0.5µL split injection of unleaded gasoline.
 Oven temp.: 35°C (hold 13 min.) to 45°C @
 10°C/min. (hold 15 min.), to 60°C
 @ 1.0°C/min. (hold 15 min.), to
 200°C @ 1.9°C/min. (hold 5 min.)
 Inj. & det. temp.: 250°C
 Carrier gas: helium
 Linear velocity: 24cm/sec. set @ 35°C
 FID sensitivity: 4 x 10⁻¹² AFS
 Split Ratio: 100:1