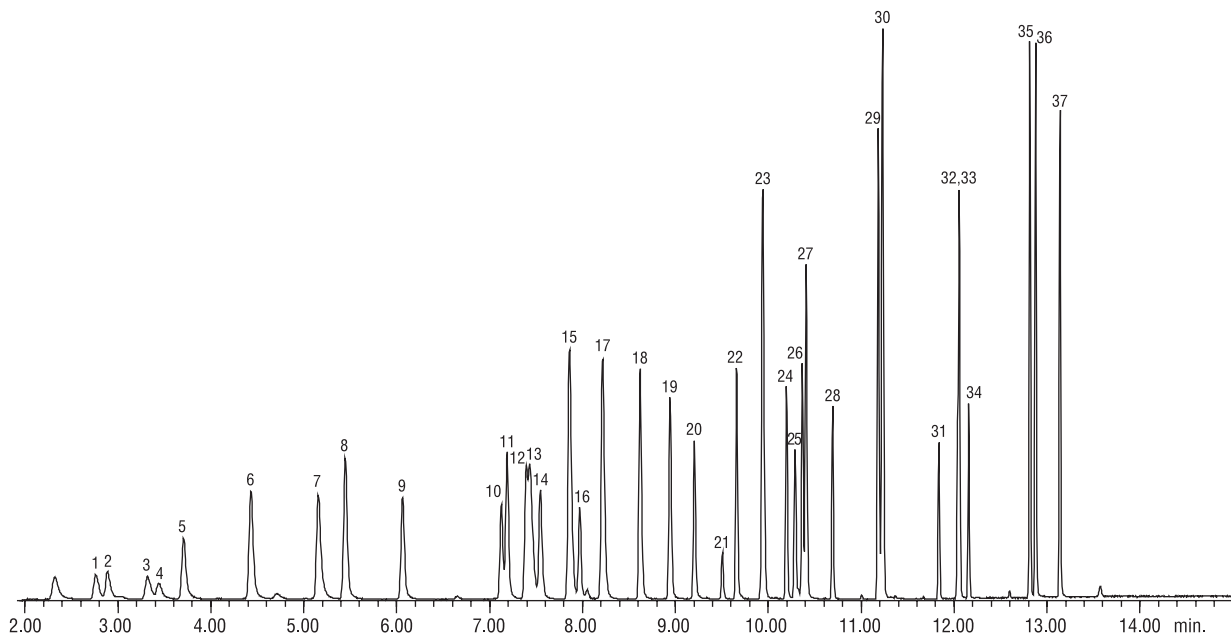


**Volatiles**  
**US EPA Method 624**  
**Rtx®-624**



GC\_EV00701

Rtx®-624, 40m, 0.18mm ID, 1.0µm (cat.# 40925)  
 Sample: 624 Internal Standard Mix (cat.# 30023)  
 624 Surrogate Standard Mix (cat.# 30243)  
 Volatiles MegaMix™ EPA Method 624 (cat.# 30497)

**Purge and trap conditions:**

Concentrator: Tekmar LSC-3100 Purge and Trap  
 Trap: Vocarb 3000 (type K)  
 compounds at 50 ppb (IS @ 40ppb) in 5mL of RO water  
 Purge: 11 min. @ 40 mL/min. @ ambient temperature  
 Dry purge: 1 min. @ 40mL/min. (MCS bypassed using Silcosteel® tubing)  
 Desorb pPreheat: 245°C  
 Desorb: 250°C for 2 min., flow 10mL/min.  
 Bake: 260°C for 8 min.  
 Interface: Silcosteel® transfer line, 1: 40 split at injection port.  
 1mm ID sleeve.

**Chromatography:**

Inj. temp.: 250°C  
 Carrier gas: helium, constant flow  
 Flow rate: 1.1 mL/min.  
 Dead time: 2.06 minutes @ 50°C  
 Oven temp.: 50°C (hold 4 min.) to 100°C @ 12°C/min. (no hold)  
 to 230°C @ 27°C/min. (hold 2 min.).  
 Det.: Agilent 5971A GC/MS  
 Transfer line temp.: 280°C  
 Scan range: 35-260 amu  
 Tune: PFTBA/BFB  
 Ionization: EI

- |                                     |                                       |
|-------------------------------------|---------------------------------------|
| 1. chloromethane                    | 20. bromodichloromethane              |
| 2. vinyl chloride                   | 21. 2-chloroethyl vinyl ether         |
| 3. bromomethane                     | 22. <i>cis</i> -1,3-dichloropropene   |
| 4. chloroethane                     | 23. toluene                           |
| 5. trichlorofluoromethane           | 24. 2-bromo-1-chloropropane           |
| 6. 1,1-dichloroethane               | 25. 1,1,2-trichloroethane             |
| 7. methylene chloride               | 26. tetrachloroethene                 |
| 8. <i>trans</i> -1,2-dichloroethene | 27. dibromochloromethane              |
| 9. 1,1-dichloroethane               | 28. <i>trans</i> -1,3-dichloropropene |
| 10. bromochloromethane              | 29. chlorobenzene                     |
| 11. chloroform                      | 30. ethylbenzene                      |
| 12. 1,1,1-trichloroethane           | 31. bromoform                         |
| 13. pentafluorobenzene              | 32. 1,4-dichlorobutane                |
| 14. carbon tetrachloride            | 33. 4-bromofluorobenzene              |
| 15. benzene                         | 34. 1,1,2,2-tetrachloroethane         |
| 16. 1,2-dichloroethane              | 35. 1,3-dichlorobenzene               |
| 17. fluorobenzene                   | 36. 1,4-dichlorobenzene               |
| 18. trichloroethene                 | 37. 1,2-dichlorobenzene               |
| 19. 1,2-dichloropropane             |                                       |