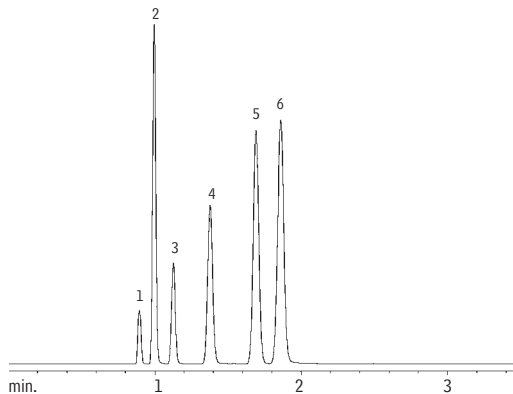


Blood Alcohol

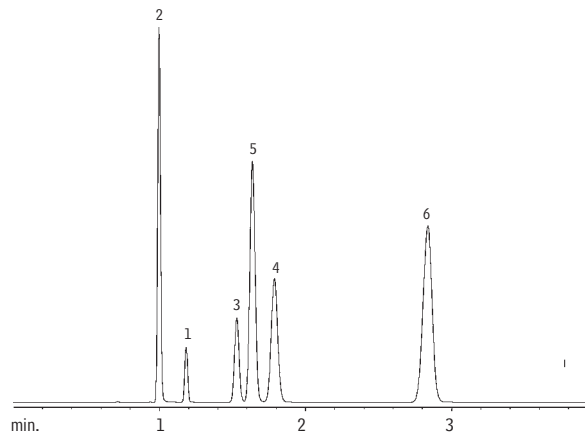
Rtx[®]-BAC1 & Rtx[®]-BAC2 (0.53mm ID columns)

(headspace analysis)



Rtx[®]-BAC1 30m, 0.53mm ID, 3.0 μ m (cat.# 18001)

1. methanol
2. acetaldehyde
3. ethanol
4. isopropanol
5. acetone
6. *n*-propanol



Rtx[®]-BAC2 30m, 0.53mm ID, 2.0 μ m (cat.# 18000)

GC_PH00239

1.0mL headspace sample of a blood alcohol mix
Sample conc.: 0.1% per compound

Oven temp.: 40°C
Inj. & det. temp.: 200°C
Carrier gas: helium
Linear velocity: 80cm/sec. set @ 40°C
FID sensitivity: 1.28 x 10⁻¹⁰ AFS