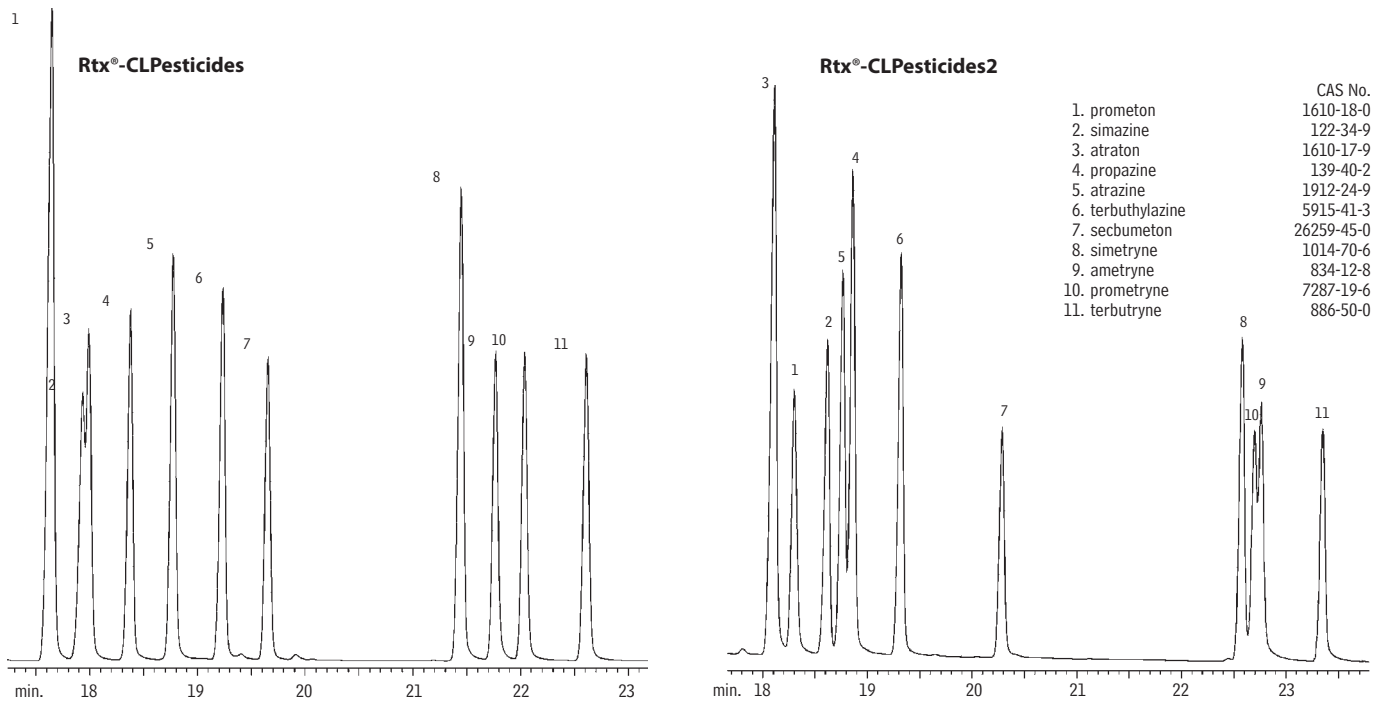


Nitrogen/Phosphorus Pesticides & Herbicides
US EPA Method 619
Rtx[®]-CLPesticides & Rtx[®]-CLPesticides2 (dual column analysis)



GC_EV00056

30m, 0.32mm ID, 0.50µm Rtx[®]-CLPesticides (cat.# 11139) and
 30m, 0.32mm ID, 0.25µm Rtx[®]-CLPesticides2 (cat.# 11324)
 with a 5m, 0.32mm ID guard column (cat.# 10044) and a 'Y' Press-Tight[®] connector (cat.# 20403).
 Direct injection using a Uniliner[®] liner (cat.#21303) and adaptor for an HP 5890 (cat.# 20964).
 On-column concentration 50pg each compound.

Oven temp.: 100°C (hold 0 min.) to 250°C @ 4°C/min. (hold 5 min.);
 Inj./det. temp.: 250°C/275°C
 Carrier gas: hydrogen, 9.65psi constant pressure
 GC: HP 6890 with purged packed injection port.