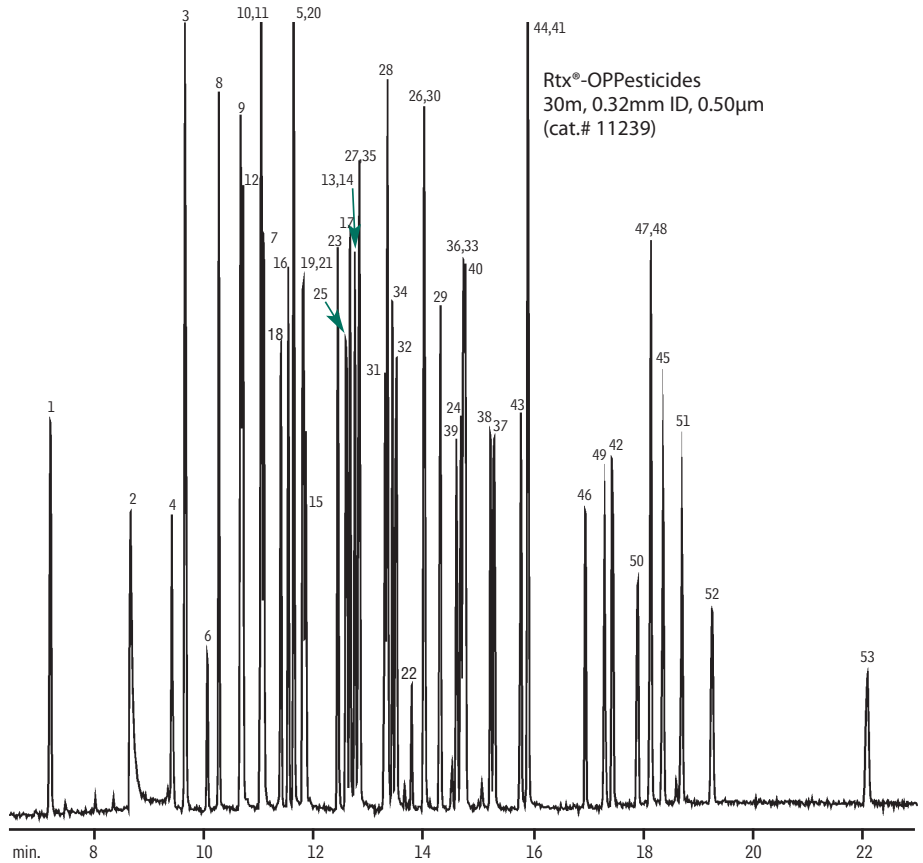


Organophosphorus Pesticides
US EPA Method 8141A
Rtx®-OPPesticides &
Rtx®-OPPesticides2

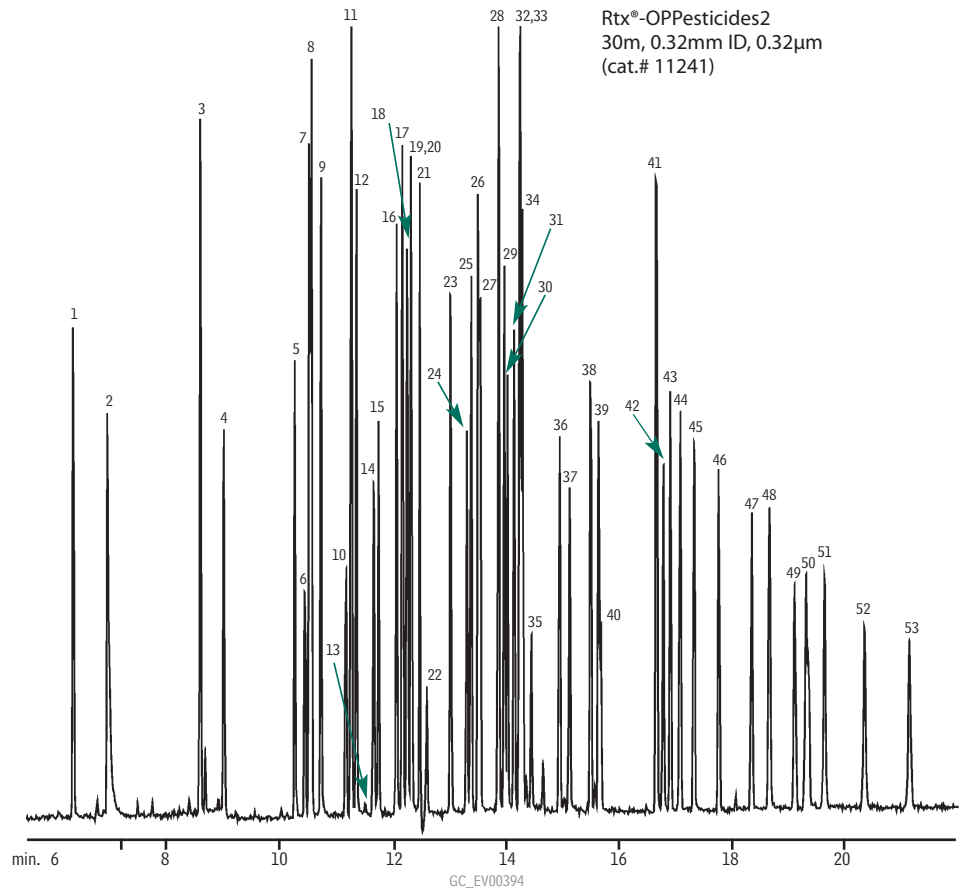
dual-column injector

GC: splitless, purge on 1.0 min. constant pressure
 Oven temp.: 80°C (hold 0.5 min.) to 280°C
 @ 12°C/min. (hold 10 min.)
 Injector: 200°C
 Inlet liner: 4mm single gooseneck Siltek® inlet liner
 Detector: FPD @ 250°C
 Dead time: 1.03 min. @ 80°C
 Injection: 1µL US EPA Method 8141A Custom
 Standard Mixes (100ng/mL)
 Triphenylphosphate Standard (cat.# 32281)
 Tributylphosphate Standard (cat.# 32280)
 8140/8141 OP Pesticides Calibration
 Mix A (cat.# 32277)
 8141 OP Pesticides Calibration Mix B
 (cat.# 32278)

1. dichlorvos
2. hexamethylphosphoramide
3. mevinphos
4. trichlorfon
5. TEPP
6. demeton-O
7. tributyl phosphate (SS)
8. thionazin
9. ethoprop
10. naled
11. sulfotepp
12. phorate
13. dicrotophos
14. monocrotophos
15. demeton-S
16. terbufos
17. dimethoate
18. diazinon
19. dioxathion
20. fonophos
21. disulfoton
22. phosphamidon isomer (breakdown product)
23. dichlorofenthion
24. phosphamidon
25. chlorpyrifos methyl
26. parathion-methyl
27. ronnel
28. aspon
29. fenitrothion
30. malathion
31. chlorpyrifos
32. trichloronate
33. parathion-ethyl
34. fenthion
35. merphos
36. chlorfenvinphos
37. crotoxyphos
38. stirofos
39. tokuthion
40. merphos oxone (breakdown product)
41. ethion
42. fensulfothion
43. bolstar
44. carbophenothion
45. famphur
46. triphenyl phosphate (SS)
47. EPN
48. phosmet
49. leptophos
50. tri-*o*-cresyl phosphate
51. azinphos-methyl
52. azinphos-ethyl
53. coumaphos



Rtx®-OPPesticides
 30m, 0.32mm ID, 0.50µm
 (cat.# 11239)



Rtx®-OPPesticides2
 30m, 0.32mm ID, 0.32µm
 (cat.# 11241)