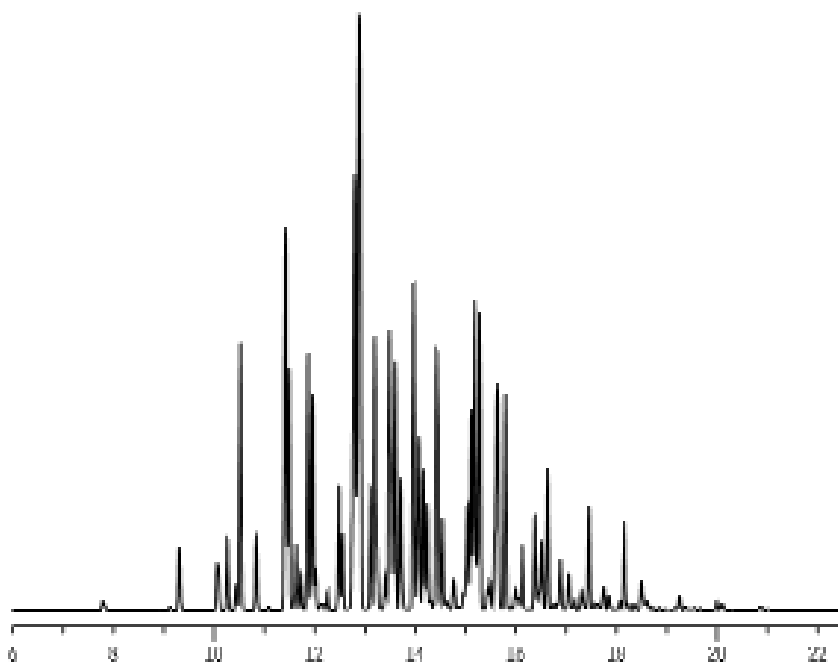


Aroclor® 1242 on Rtx®-PCB



GC_EV00752

Column: Rtx®-PCB 30m, 0.25mm ID, 0.25 μ m (cat.# 13223)
Sample: 200ng/mL Aroclor® 1242 (cat.# 32009)
Inj.: 1.0 μ L splitless (hold 0.75 min.), 3.5mm ID single gooseneck
inlet liner (cat.# 20962)
Inj. temp.: 250°C
Carrier gas: hydrogen, constant pressure
Linear velocity: 71cm/sec. @ 110°C
Oven temp.: 100°C (hold 1.0 min.) to 300°C @ 10°C/min. (hold 4 min.)
Det.: ECD @ 310°C