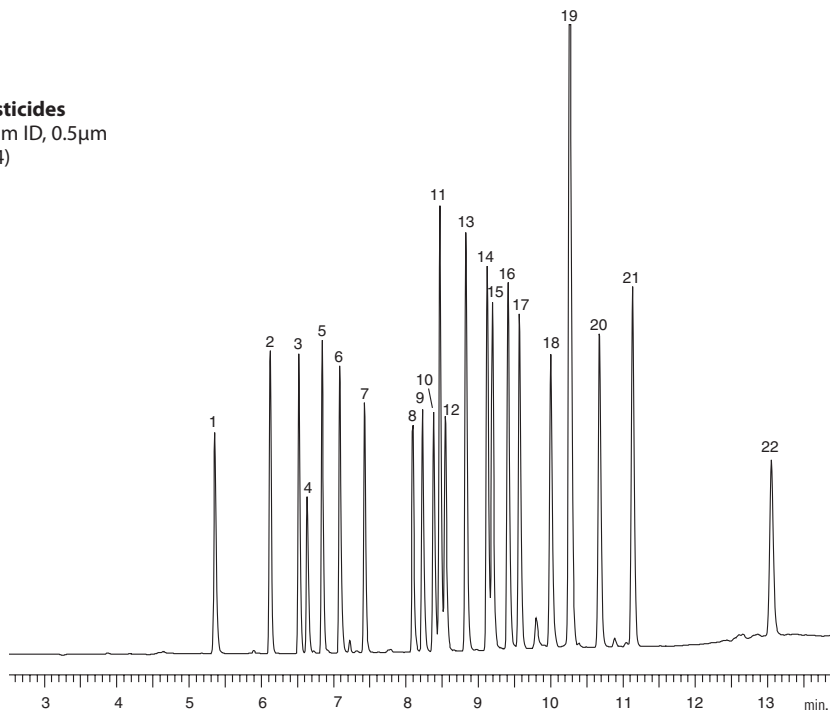


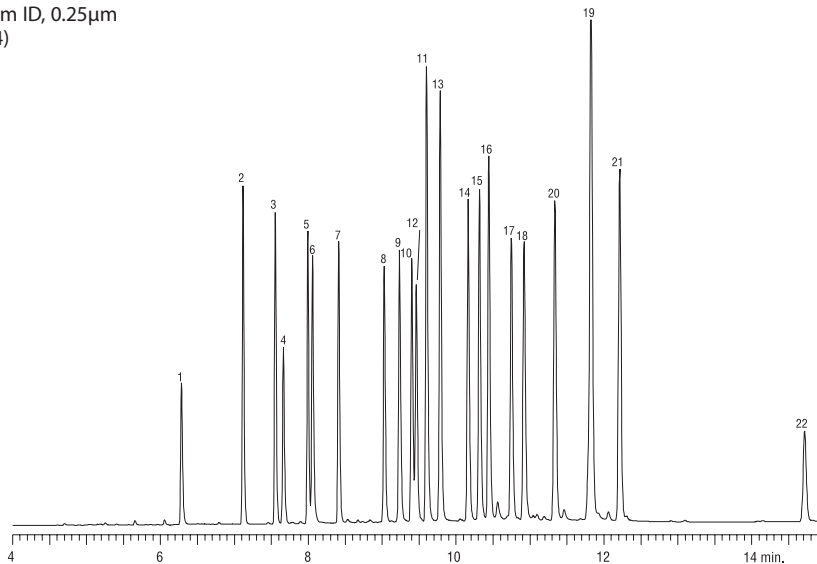
Organochlorine Pesticides
US EPA Method 8081
Stx™-CLPesticides & Stx™-CLPesticides2

Stx™-CLPesticides
 30m, 0.32mm ID, 0.5µm
 (cat.# 11544)



1. 2,4,5,6 tetrachloro-*m*-xylene (SS)
2. α -BHC
3. γ -BHC
4. β -BHC
5. δ -BHC
6. heptachlor
7. aldrin
8. heptachlor epoxide
9. γ -chlordane
10. α -chlordane
11. 4,4'-DDE
12. endosulfan I
13. dieldrin
14. endrin
15. 4,4'-DDD
16. endosulfan II
17. 4,4'-DDT
18. endrin aldehyde
19. methoxychlor
20. endosulfan sulfate
21. endrin ketone
22. decachlorobiphenyl (SS)

Stx™-CLPesticides2
 30m, 0.32mm ID, 0.25µm
 (cat.# 11444)



GC_EV00512

Inj.: 1µL direct injection of 20/40/200ng/mL std. concentration in hexane
 Oven temp.: 110°C (hold 1 min.) to 245°C @ 20°C/min. to 300°C @ 6°C/min.
 Inj. & det. temp.: 210°C / 310°C
 Carrier gas: helium
 Dead time: 0.8min. @ 120°C
 Inlet liner: Siltek®-deactivated Drilled Uniliner® inlet liner (cat.# 21055-214.5)
 Make-up gas: nitrogen