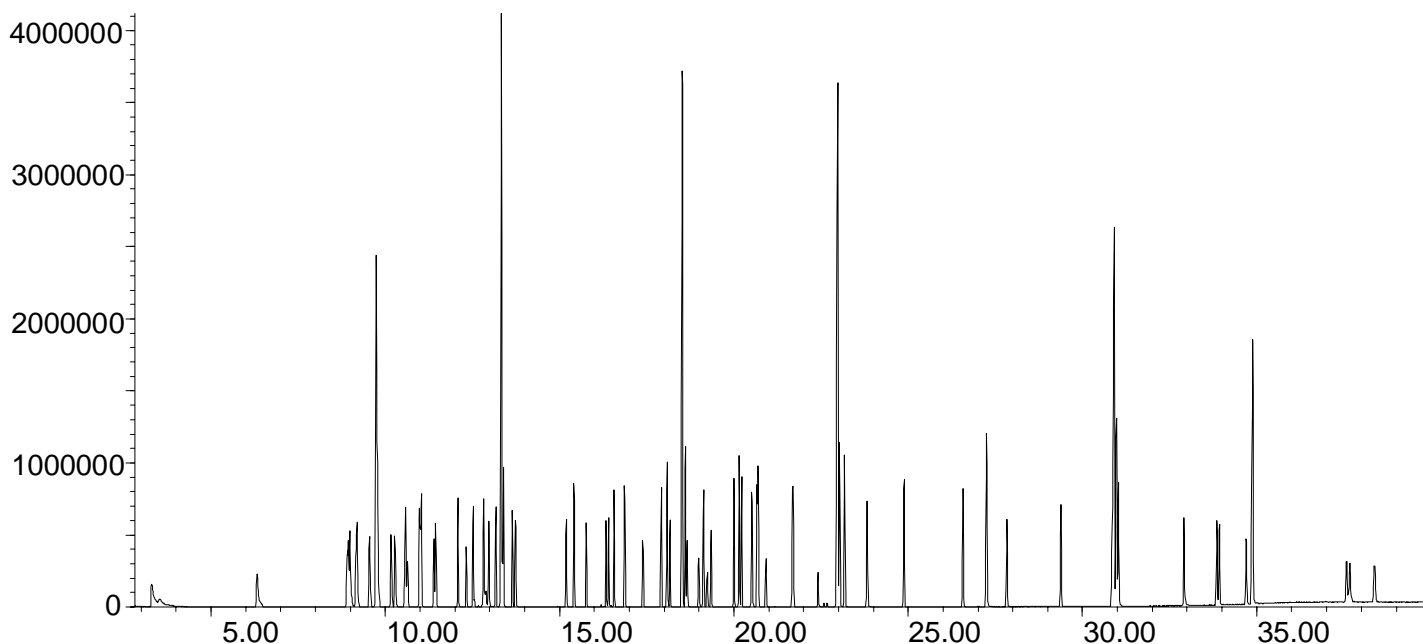


ENV 84

Environmental

Analysis of US EPA 8270 mix on BPX5

Phase: BPX5, 0.25 μ m film
Sample: 5ppm solution
Column: 30m x 0.25 mm ID
Initial Temp: 40°C, 3 min.
Rate 1: 8°C/min to 300°C,
Final Temp: 300°C, 9 min.
Detector Type: Mass Spectrometer
Carrier Gas: He,
Inlet Pressure: 16 psi for 30 sec then drops to 10psi
Pressure rate1: 10psi to 28psi at 0.5 psi/min
Final Pressure: 28psi until end of run.
Carrier Gas Flow: 1.1 mL/min.
Constant Flow: On
Injection Mode: Splitless
Purge on Time: 0.5 min
Purge on (Split)Vent Flow: 40mL/min
Injection Volume: 1 μ L
Injection Temperature: 250°C
Autosampler: No
Liner Type: 4 mm ID Single Gooseneck
Liner Part Number: 092017
Column Part Number: 054101
Full Scan / SIM: Full scan 41-450



visit www.sge.com or contact our technical Customer Support Team on: techsupport@sge.com

SGE International Pty. Ltd.
email: support@sge.com

SGE, Incorporated (USA)
email: usa@sge.com

SGE (Italia) Srl.
email: sge.italia@tin.it

SGE China Service Centre
email: sge@bj.col.com.cn

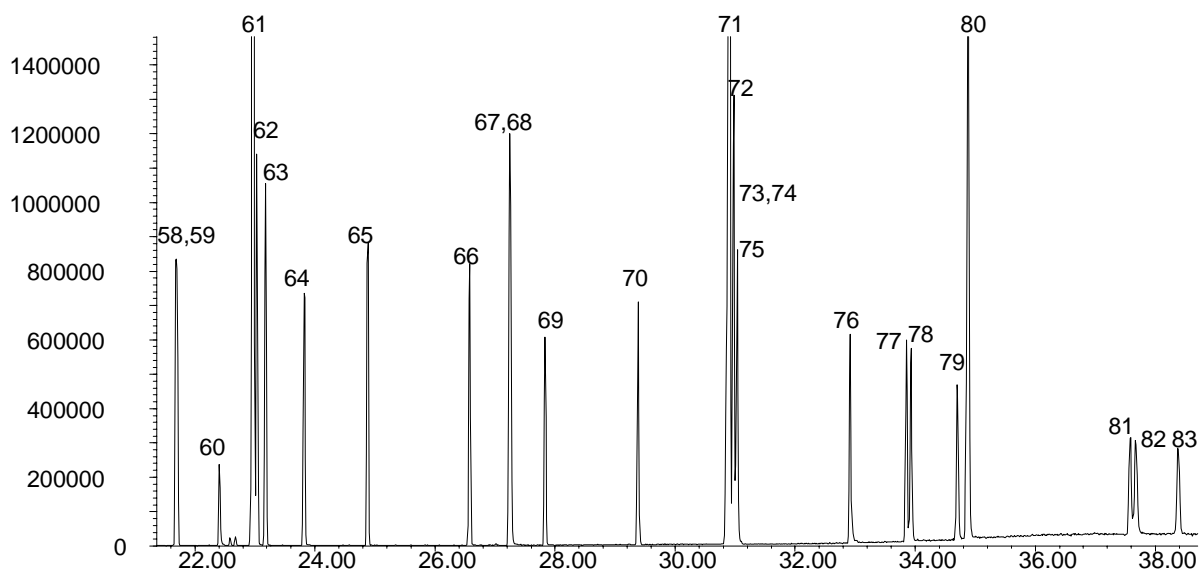
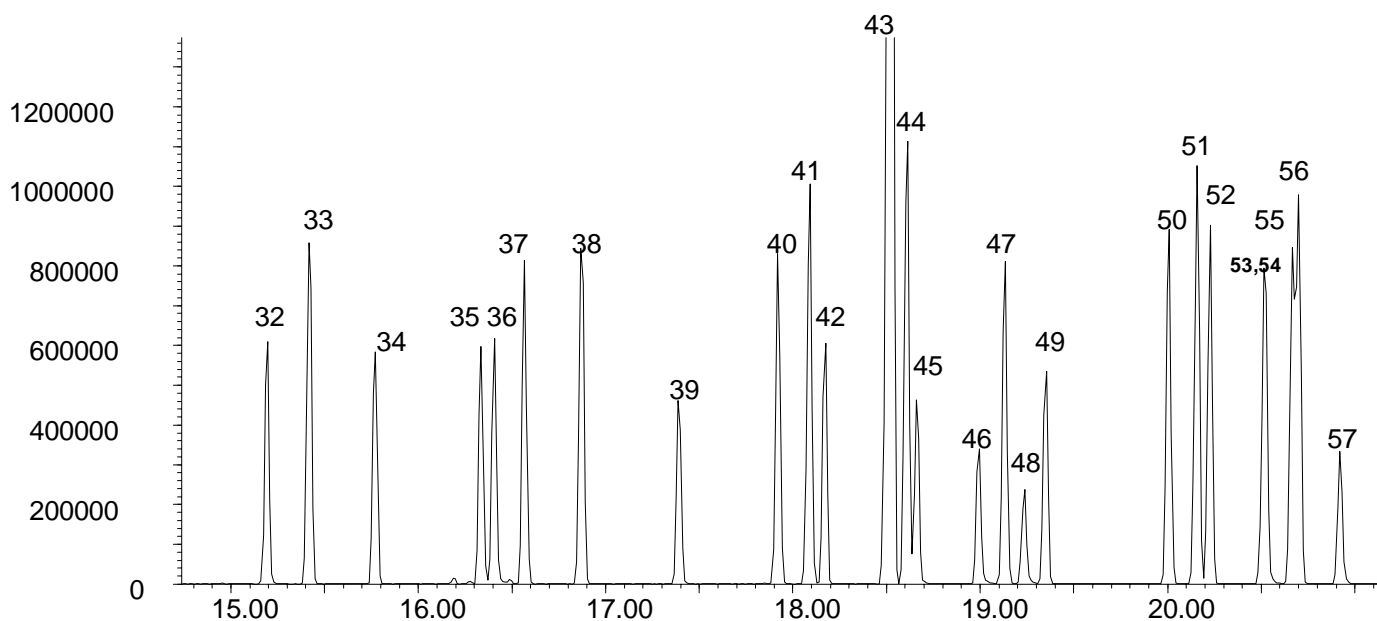
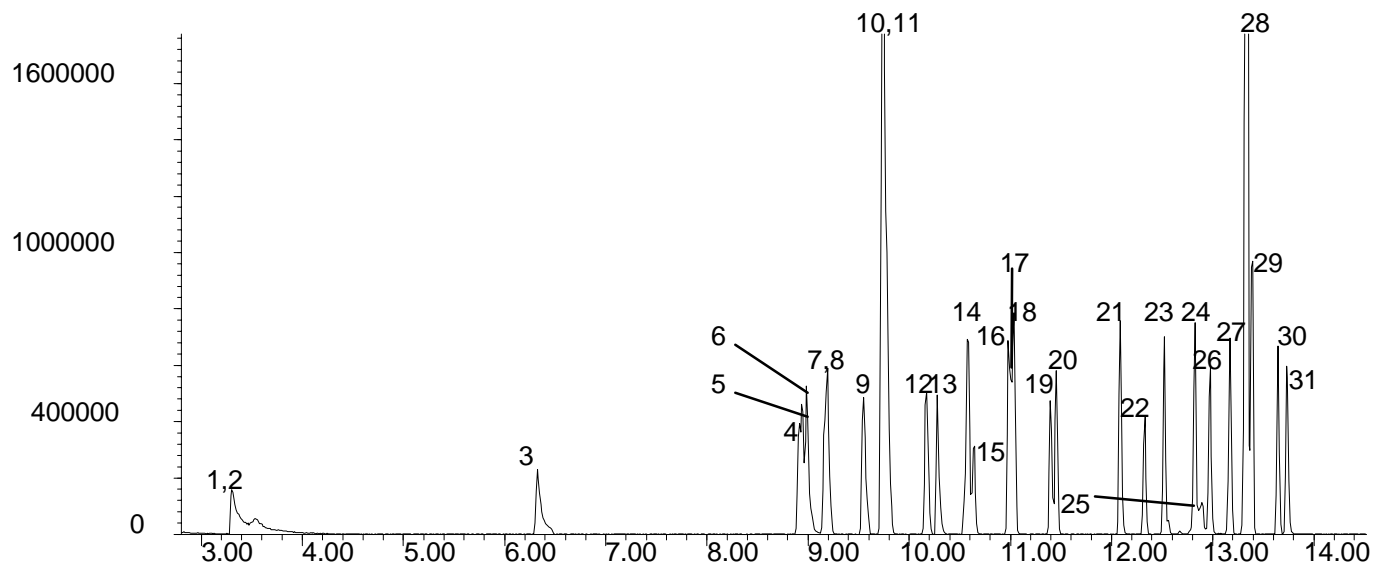
SGE India
email: sgeindia@vsnl.com

SGE Europe Ltd. (UK)
email: uk@sge.com

SGE (France) Sarl
email: france@sge.com

SGE Deutschland GmbH
email: germany@sge.com

SGE Japan Inc.
email: japan@sge.com



Components

1. Pyridine
2. *n*-Nitrosodimethylamine
3. 2-Fluorophenol
4. Phenol-d5
5. Phenol
6. Aniline
7. 2-Chlorophenol
8. bis-(2-chloroethyl) ether
9. 1,3-Dichlorobenzene
10. 1,4-Dichlorobenzene-d4
11. 1,4-Dichlorobenzene
12. 1,2-Dichlorobenzene
13. Benzyl alcohol
14. 2-Methyl phenol
15. bis-(2-chloroisopropyl)ether
16. *n*-Nitroso-di-*n*-propylamine
17. Hexachloroethane
18. 4-Methylphenol
19. Nitrobenzene-d5
20. Nitrobenzene
21. Isophorone
22. 2-Nitrophenol
23. 2,4-Xylenol
24. bis-(2-Chloroethoxy) methane
25. Benzoic acid
26. 2,4-Dichlorophenol
27. 1,2,4-Trichlorobenzene
28. Naphthalene-d8
29. Naphthalene
30. Hexachlorobutadiene
31. 4-Chloroaniline
32. 4-Chloro-3-methylphenol
33. 2-Methylnaphthalene
34. Hexachlorocyclopentadiene
35. 2,4,6-Trichlorophenol
36. 2,4,5-Trichlorophenol
37. 2-Fluorobiphenyl
38. 2-Chloronaphthalene
39. 2-Nitroaniline
40. Dimethyl phthalate
41. Acenaphthylene
42. 2,6-Dinitrotoluene
43. Acenaphthene-d10
44. Acenaphthene
45. 3-Nitroaniline
46. 2,4-Dinitrophenol
47. Dibenzofuran
48. 4-Nitrophenol
49. 2,4-Dinitrotoluene
50. Diethylphthalate
51. Fluorene
52. 4-Chlorophenyl phenyl ether
53. 2-Methyl-4,6-dinitrophenol
54. 4-Nitroaniline
55. *n*-Nitrosodiphenylamine
56. Azobenzene
57. 2,4,6-Tribromophenol
58. 4-Bromophenyl phenyl ether
59. Hexachlorobenzene
60. Pentachlorophenol
61. Phenanthrene-d10
62. Phenanthrene
63. Anthracene
64. Carbazole
65. Di-*n*-butyl phthalate
66. Fluoranthene
67. Benzidine
68. Pyrene
69. *p*-Terphenyl-d14
70. Butyl benzyl phthalate
71. Benz[a]anthracene
72. Chrysene-d12
73. Chrysene
74. 3,3-Dichlorobenzidine
75. bis(2-Ethylhexyl)phthalate
76. Di-*n*-octyl phthalate
77. Benzo[b]fluoranthene
78. Benzo[k]fluoranthene
79. Benzo[a]pyrene
80. Perylene-d12
81. Indeno[1,2,3-cd]perylene
82. Dibenz[a,h]anthracene
83. Benzo[g,h,i]perylene

SGE would like to thank Mark Ferry from ECS/MDL USA for supplying all of the chromatograms for this application note.

visit www.sge.com or contact our technical Customer Support Team on: techsupport@sge.com

SGE International Pty. Ltd.
email: support@sge.com

SGE, Incorporated (USA)
email: usa@sge.com

SGE (Italia) Srl.
email: sge.italia@tin.it

SGE China Service Centre
email: sge@bj.col.com.cn

SGE India
email: sgeindia@vsnl.com

SGE Europe Ltd. (UK)
email: uk@sge.com

SGE (France) Sarl
email: france@sge.com

SGE Deutschland GmbH
email: germany@sge.com

SGE Japan Inc.
email: japan@sge.com