

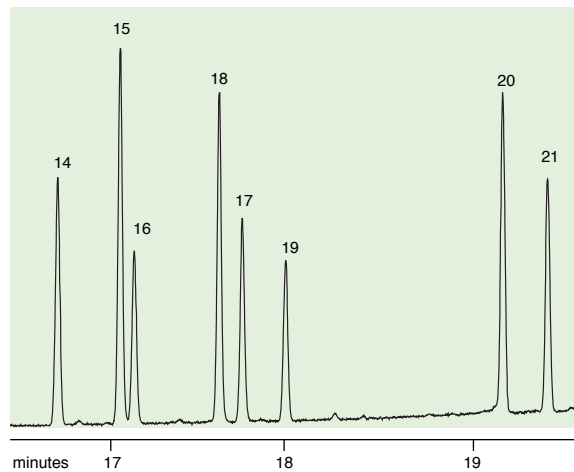
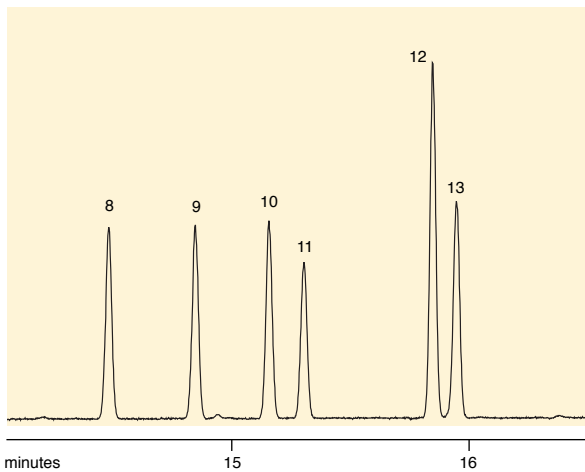
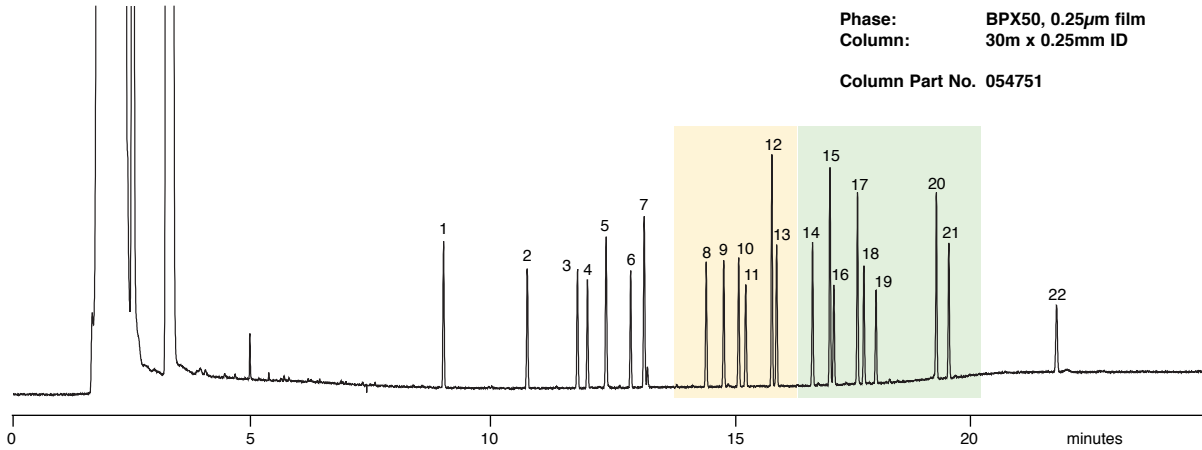
ENV 47 ENVIRONMENTAL

8081 Organochlorine Pesticides on BPX50

Sample Description: 8081 mix with internal standards 10mg/L, 5ng per component on column

BPX50 column

Phase: BPX50, 0.25µm film
 Column: 30m x 0.25mm ID
 Column Part No. 054751



Sample Introduction:

Split / Splitless: Splitless
 Injector Temp: 240°C
 Injection Volume: 1µL
 Autosampler Syringe: 5µL Fixed Needle
 Part No. 001810
 Septa: Auto-Sep T™
 Part No. 041882

Injection Type: Splitless
 Purge On Time: 0.5min
 Purge On (Spilt) Vent: 60mL/min
 Split Ratio: NA
 Liner Type: Single taper
 Part No. 092017

Pressure/Flow Values:

Carrier Gas: Helium
 Constant Flow: On
 Pressure: 14.1psi
 Column Flow: 1.3mL/min
 Linear Velocity: 30cm/sec @ 40°C

Oven Parameters:

Initial Temp: 40°C
 Initial Time: 1min
 Rate 1: 30°C/min
 Final Temp 1: 190°C
 Hold Time: 3min
 Rate 2: 10°C/min
 Final Temp 2: 300°C
 Hold Time: 5min
 Run Time: 25.00min

Detector Parameters:

Detector Type: FID @ 310°C

1. 2, 4, 5, 6 – tetrachloro – meta – xylene
2. α – BHC
3. γ – BHC
4. - BHC
5. Heptachlor
6. δ - BHC
7. Aldrin
8. Heptachlorepoxy
9. gamma – chlordane
10. alpha – chlordane
11. Endosulfan A
12. p, p' – DDE
13. Dieldrin
14. Endrin
15. p, p' – DDD
16. Endosulfan B
17. p, p' - DDT
18. Endrin Aldehyde
19. Endosulfan Sulfate
20. Methoxychlor
21. Endrin Ketone
22. Decachlorobiphenyl

visit www.sge.com or contact our technical Customer Support Team on: techsupport@sge.com

SGE International Pty. Ltd.
 email: support@sge.com

SGE Incorporated (USA)
 email: usa@sge.com

SGE (France) Sarl
 email: france@sge.com

SGE Deutschland GmbH
 email: germany@sge.com

SGE Japan Inc.
 email: sgejpn@itjit.ne.jp

SGE Australia Pty. Ltd.
 email: sales@sge.com

SGE Europe Ltd. (UK)
 email: uk@sge.com

SGE (Italia) Srl.
 email: sge.italia@tin.it

SGE China Service Centre
 email: sge@bj.col.com.cn

SGE India
 email: sgeindia@bom4.vsnl.net.in