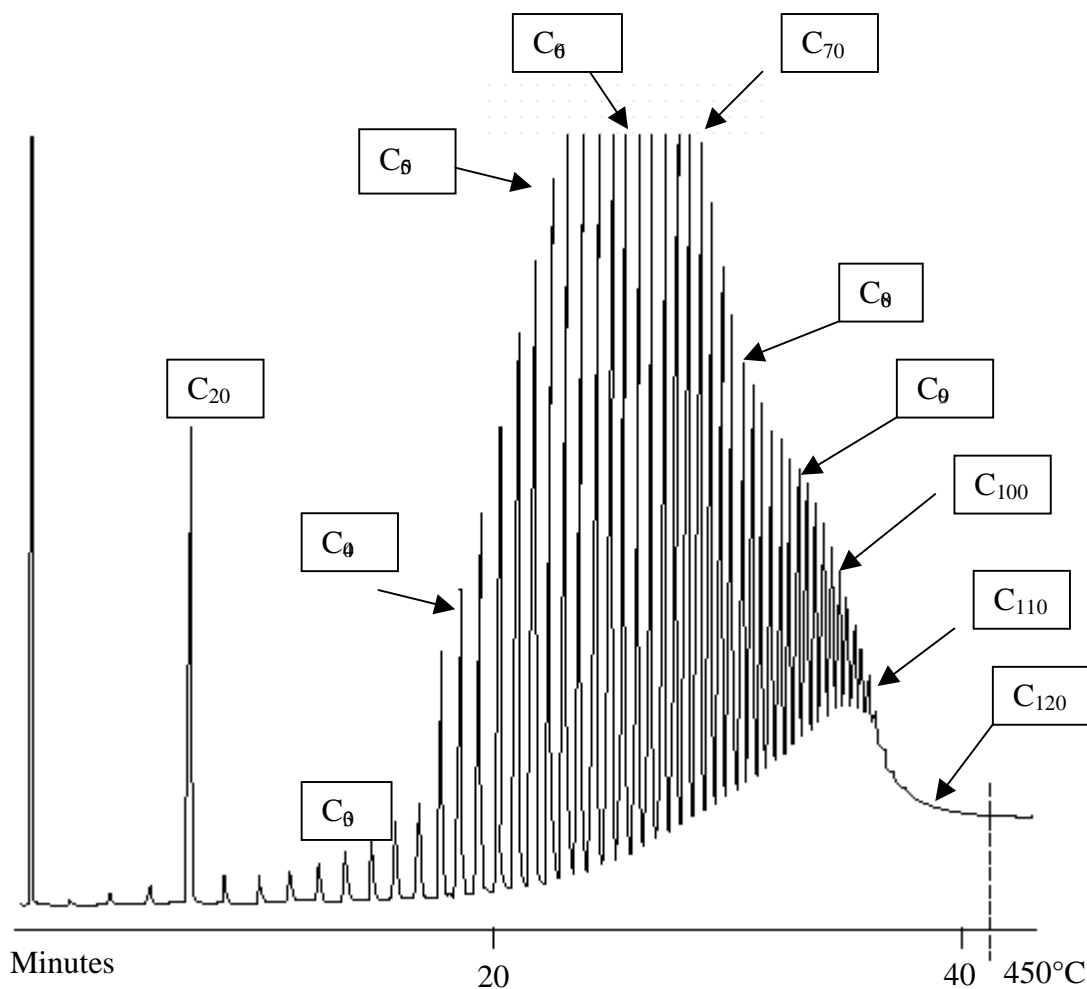


## PET 27 PETROLEUM

## Analysis of Polywax 1000 on an Aluminium Clad HT5

Part No.: 054673  
Phase: HT5, 0.075µm film  
Column: 5m x 0.53 mm ID  
Initial Temp: 40°C, 1 min  
Rate: 10°C/min  
Final Temp: 450°C, 10 min  
Carrier Gas: He, 20mL/min  
Solvent: CS<sub>2</sub>



visit [www.sge.com](http://www.sge.com) or contact our technical Customer Support Team on: [techsupport@sge.com](mailto:techsupport@sge.com)

email: [support@sge.com](mailto:support@sge.com)  
SGE Australia Pty. Ltd.  
email: [sales@sge.com](mailto:sales@sge.com)

SGE Incorporated (USA)  
email: [usa@sge.com](mailto:usa@sge.com)  
SGE Europe Ltd. (UK)  
email: [uk@sge.com](mailto:uk@sge.com)

SGE (France) Sarl  
email: [france@sge.com](mailto:france@sge.com)  
SGE (Italia) Srl.  
email: [sge.italia@tin.it](mailto:sge.italia@tin.it)

SGE Deutschland GmbH  
email: [germany@sge.com](mailto:germany@sge.com)  
SGE China Service Centre  
email: [sge@bj.col.com.cn](mailto:sge@bj.col.com.cn)

SGE Japan Inc.  
email: [sgejpn@itjit.ne.jp](mailto:sgejpn@itjit.ne.jp)  
SGE India  
email: [sgeindia@bom4.vsnl.net.in](mailto:sgeindia@bom4.vsnl.net.in)