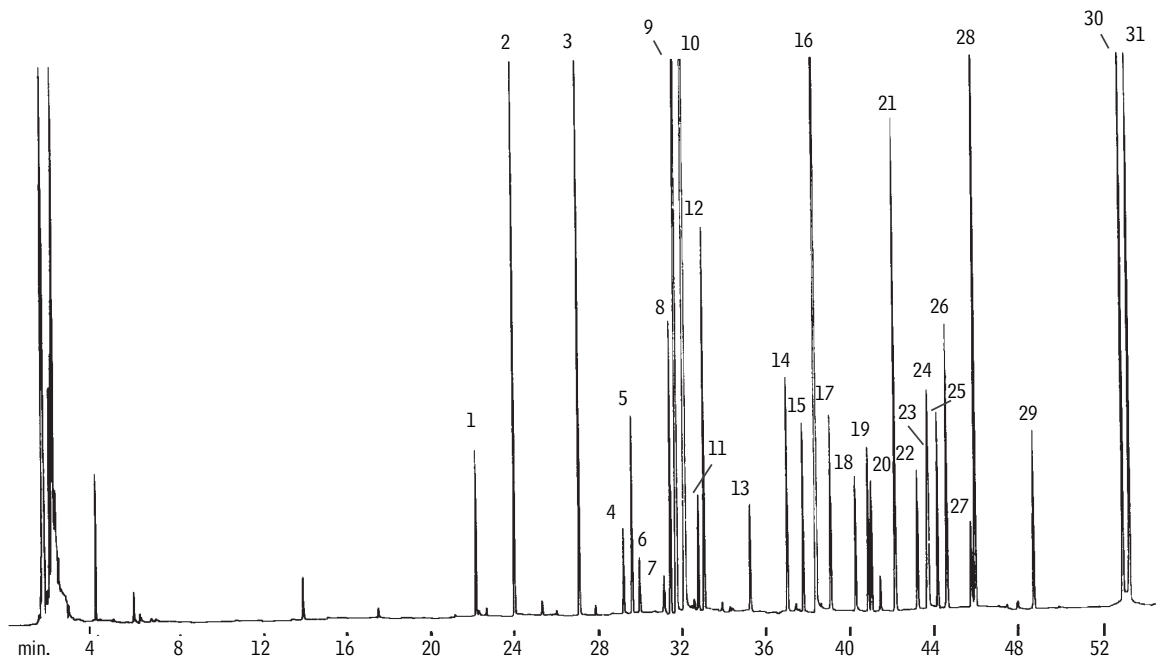


# Organochlorine Pesticides US EPA Method 508 Rtx®-5

Peak	Conc. (pg/ $\mu$ L)
1. etridiazole	50
2. chlordane	1000
3. propachlor	1000
4. trifluralin	50
5. $\alpha$ -BHC	20
6. hexachlorobenzene	10
7. $\gamma$ -BHC	30
8. $\beta$ -BHC	20
9. PCNB (impurity)	100
10. PCNB (IS)	100
11. $\delta$ -BHC	20
12. chlorothalonil	50
13. heptachlor	20
14. aldrin	30
15. DCPA	50
16. DCB (SS)	5000
17. heptachlor epoxide	30
18. $\gamma$ -chlordane	30
19. endosulfan I	30
20. $\alpha$ -chlordane	30
21. dieldrin	40
22. endrin	30
23. endosulfan II	30
24. chlorobenzilate	1000
25. 4,4'-DDD	50
26. endrin aldehyde	50
27. endosulfan sulfate	30
28. 4,4'-DDT	120
29. methoxychlor	100
30. <i>cis</i> -permethrin	1000
31. <i>trans</i> -permethrin	1000



GC\_EV00083

30m, 0.25mm ID, 0.25 $\mu$ m Rtx®-5 (cat.# 10223)  
2.0 $\mu$ L splitless injection

Splitless hold: 0.75 min.  
Oven temp.: 60°C to 300°C @ 4°C/min. (hold 10 min.)  
Inj. / det. temp.: 250°C / 320°C  
Carrier gas: helium  
Linear velocity: 30cm/sec. (flow rate: 1.4cc/min.)