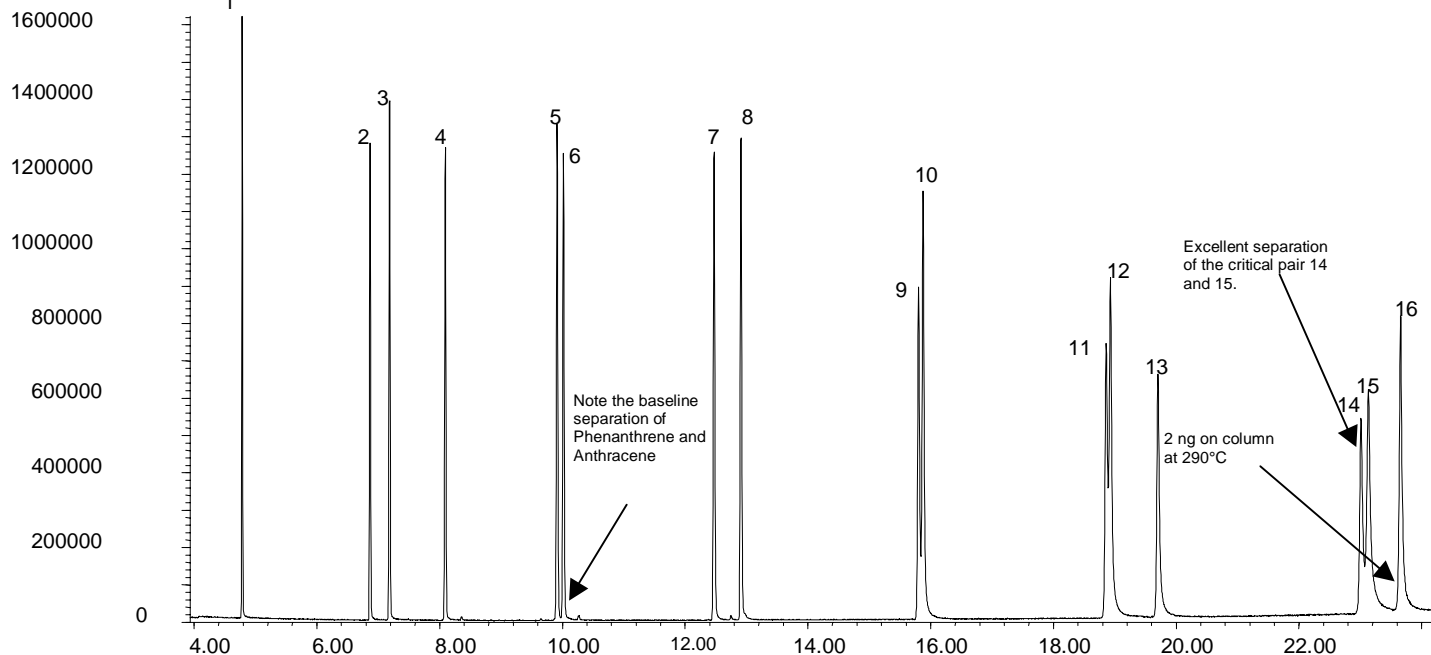


Analysis of Polynuclear Aromatic Hydrocarbons (PAH) on SolGel-1ms™

Phase: SolGel-1, 0.25µm film
Sample: 100ppm in Dichloromethane
Column: 30m x 0.25 mm ID
Initial Temp: 65°C, 1 min.
Rate 1: 25°C/min to 140°C,
Rate 2: 10°C/min to 240°C
Rate 3: 5°C/min to 300°C
Final Temp: 300°C, 2 min.
Detector Type: Mass Spectrometer
Carrier Gas: He, 27.8 psi
Carrier Gas Flow: 1.7 mL/min.
Constant Flow: On
Average Linear Velocity: 35 cm/sec at 65°C
Injection Mode: Split
Split Ratio: 50:1
Injection Volume: 1 µL
Injection Temperature: 250°C
Autosampler: No
Liner Type: 4 mm ID Single Taper Liner
Liner Part Number: 092017
Column Part Number: 054795
ms-NoVent™ Part no.: 113400
HP5973 restrictor: 113409
Full Scan / SIM: Full scan 40-500

Components

1. Naphthalene
2. Acenaphthylene
3. Acenaphthene
4. Fluorene
5. Phenanthrene
6. Anthracene
7. Fluoranthene
8. Pyrene
9. Benzo(a)anthracene
10. Chrysene
11. Benzo(b)fluoranthene
12. Benzo(k)fluoranthene
13. Benzo(a)pyrene
14. Indeno(1,2,3-c,d)pyrene
15. Dibenzo(a,h)anthracene
16. Benzo(g,h,i)perylene



visit www.sge.com or contact our technical Customer Support Team on: techsupport@sge.com