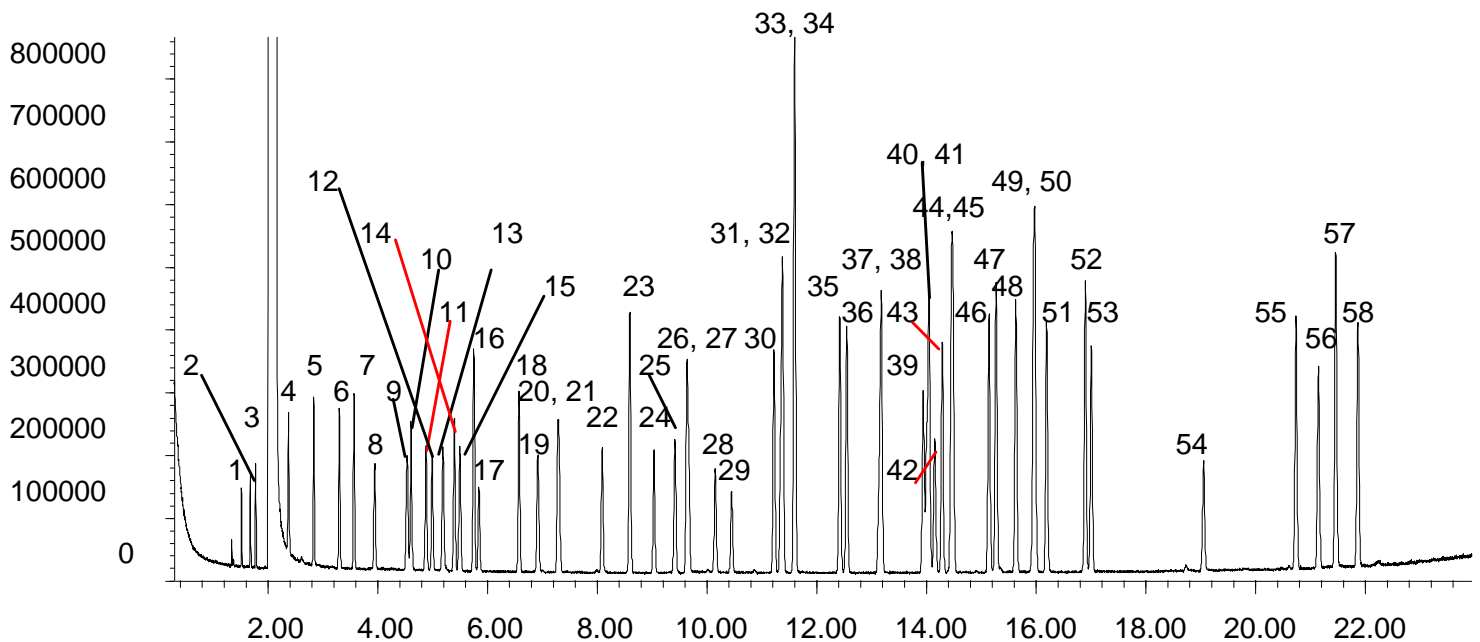


ENV 71 Environmental

Analysis of the US EPA 502.2 Test Mix on BP624

Phase:	BP624 1.2µm film	Injection Mode:	Split
Sample:	200ppm in methanol	Split Ratio:	100:1
Column:	30m x 0.22 mm ID	Injection Volume:	1 µL
Initial Temp:	40°C, 1 min.	Injection Temperature:	250°C
Rate 1:	6°C/min to 210°C,	Autosampler:	No
Rate 2:	15°C/min to 260°C	Column Part Number:	054827
Final Temp:	260°C, 5 min.	ms-NoVent™ Part no.:	113400
Detector Type:	MSD	HP5973 restrictor:	113409
Carrier Gas:	He, 25.7 psi	Full Scan / SIM:	Full scan 45-450
Carrier Gas Flow:	1.8 mL/min.	Liner Type:	4mmID Single Taper Liner
Constant Flow:	On	Liner Part Number:	092017
Average Linear Velocity:	35 cm/sec at 40°C		



Scroll down for list of components

visit www.sge.com or contact our technical Customer Support Team on: techsupport@sge.com

SGE International Pty. Ltd.
email: support@sge.com

SGE, Incorporated (USA)
email: usa@sge.com

SGE (Italia) Srl.
email: sge.italia@tin.it

SGE China Service Centre
email: sge@bj.col.com.cn

SGE India
email: sgeindia@vsnl.com

SGE Europe Ltd. (UK)
email: uk@sge.com

SGE (France) Sarl
email: france@sge.com

SGE Deutschland GmbH
email: germany@sge.com

SGE Japan Inc.
email: japan@sge.com

Components

1. Dichlorodifluoromethane
2. Chloromethane
3. Vinyl chloride
4. Trichlorofluoromethane
5. 1,1-Dichloroethene
6. Dichloromethane
7. trans-1,2-Dichloroethene
8. 1,1-Dichloroethane
9. 2,2-Dichloropropane
10. cis-1,2-Dichloroethene
11. Chloroform
12. Bromochloromethane
13. 1,1,1-Trichloroethane
14. 1,1-Dichloropropene
15. Carbon tetrachloride
16. Benzene
17. 1,2-Dichloroethane
18. Trichloroethene
19. 1,2-Dichloropropane
20. Dibromomethane
21. Bromodichloromethane
22. cis-1,3-Dichloropropene
23. Toluene
24. trans-1,3-Dichloropropene
25. 1,1,2-Trichloroethane
26. Tetrachloroethene
27. 1-Chloro-1-propene
28. Dibromochloromethane
29. 1,2-Dibromoethane
30. Chlorobenzene
31. 1,1,1,2-Tetrachloroethane
32. Ethyl benzene
33. p-Xylene
34. m-Xylene
35. o-Xylene
36. Styrene
37. Bromoform
38. Isopropylbenzene
39. Bromobenzene
40. 1,1,2,2-Tetrachloroethane
41. n-Propyl benzene
42. 1,2,3-Trichloropropane
43. 2-Chlorotoluene
44. 1,2,3-Trimethylbenzene
45. 4-Chlorotoluene
46. tert-Butylbenzene
47. 1,2,4-Trimethylbenzene
48. sec-Butylbenzene
49. 1,3-Dichlorobenzene
50. Isopropyltoluene
51. 1,4-Dichlorobenzene
52. n-Butylbenzene
53. 1,2-Dichlorobenzene
54. 1,2-Dibromo-3-chloropropane
55. 1,2,4-Trichlorobenzene
56. Hexachlorobutadiene
57. Naphthalene
58. 1,2,3-Trichlorobenzene