

FAM 09
FATTY ACID METHYL ESTERS

Analysis of Fatty Acid Methyl Ester Mixture on BPX70

KEYWORDS:

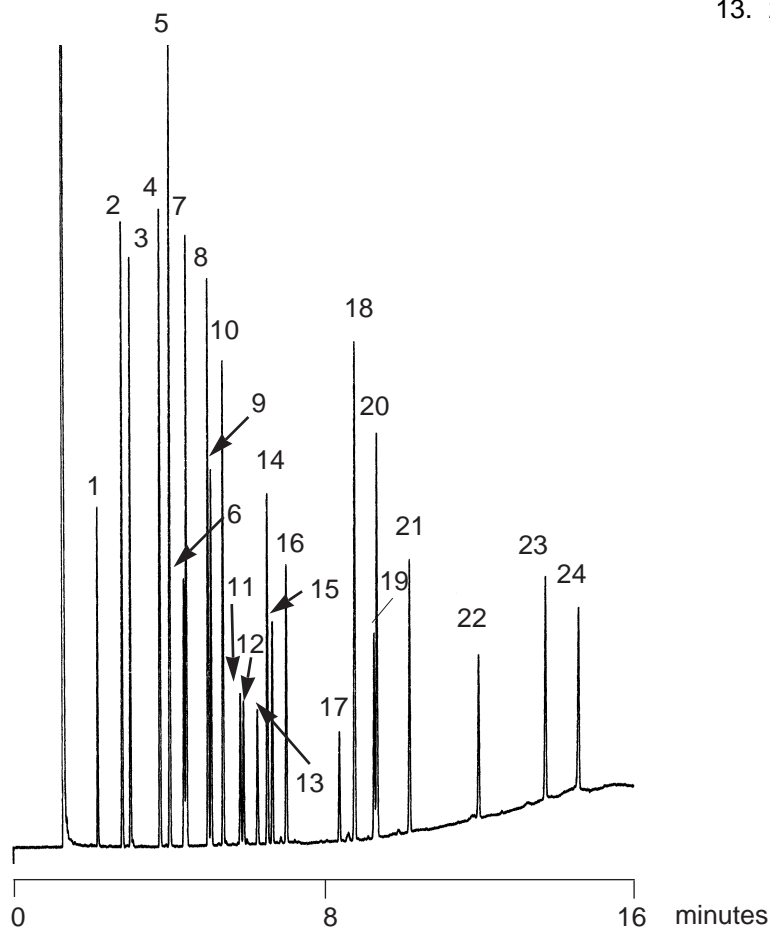
FAME

FATTY ACID METHYL ESTER MIXTURE

Part No.: 054602
Phase: BPX70, 0.25µm film
Column: 25m x 0.22mm I.D.
Initial Temp.: 180°C, 1min.
Program Rate: 5°C/min.
Final Temp.: 250°C, 2min.
Detector: F.I.D.
Sensitivity: 32 x10⁻¹²AFS
Injection Mode: Split, 50:1

Components

- | | |
|----------|----------|
| 1. 14:0 | 14. 20:4 |
| 2. 16:0 | 15. 22:0 |
| 3. 16:1 | 16. 22:1 |
| 4. 18:0 | 17. 24:0 |
| 5. 18:1 | 18. 24:1 |
| 6. 19:0 | 19. 25:0 |
| 7. 18:2 | 20. 22:6 |
| 8. 18:3 | 21. 26:0 |
| 9. 20:0 | 22. 28:0 |
| 10. 20:1 | 23. 30:0 |
| 11. 20:2 | 24. 31:0 |
| 12. 21:0 | |
| 13. 20:3 | |



visit www.sge.com or contact our technical Customer Support Team on: techsupport@sge.com

SGE International Pty. Ltd.
email:support@sge.com

SGE Incorporated (USA)
email:usa@sge.com

SGE (France) Sarl
email:france@sge.com

SGE Deutschland GmbH
email:germany@sge.com

SGE Japan Inc.
email:sgejpn@itjit.ne.jp

SGE Australia Pty. Ltd.
email:sales@sge.com

SGE Europe Ltd. (UK)
email:uk@sge.com

SGE (Italia) Srl.
email:sge.italia@tin.it

SGE China Service Centre
email:sge@bj.col.com.cn

SGE India
email:sgeindia@bom4.vsnl.net.in