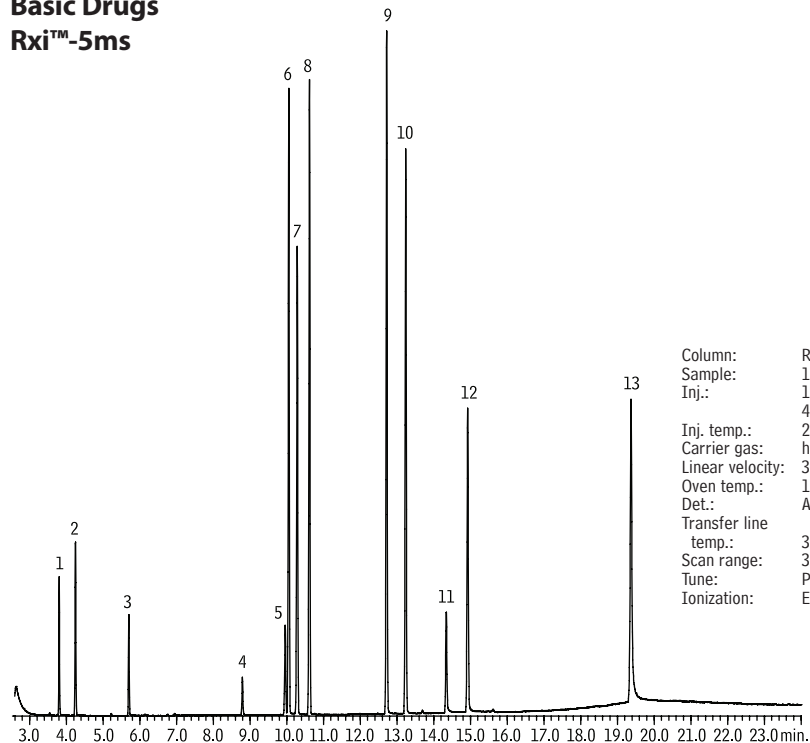


Basic Drugs

Rxi™-5ms



GC_PH00814

1. amphetamine
2. methamphetamine
3. nicotine
4. cotinine
5. caffeine
6. benzphetamine
7. ketamine
8. phencyclidine
9. methadone
10. cocaine
11. codeine
12. scopolamine
13. alprazolam

Column: Rxi™-5ms 30m, 0.25mm ID, 0.25 μ m (cat.# 13423)
Sample: 1000 μ g/mL each in methanol
Inj.: 1.0 μ L split (50:1), 20 μ g each compound on column; Siltek® treated 4mm gooseneck splitless inlet liner (cat # 20799-214.5)
Inj. temp.: 250°C
Carrier gas: helium
Linear velocity: 30cm/sec., constant pressure
Oven temp.: 100°C to 220°C @ 15°C/min., to 330°C @ 10°C/min. (hold 5 min.)
Det.: Agilent 5973 MSD
Transfer line temp.: 300°C
Scan range: 35-550
Tune: PFTBA
Ionization: EI