

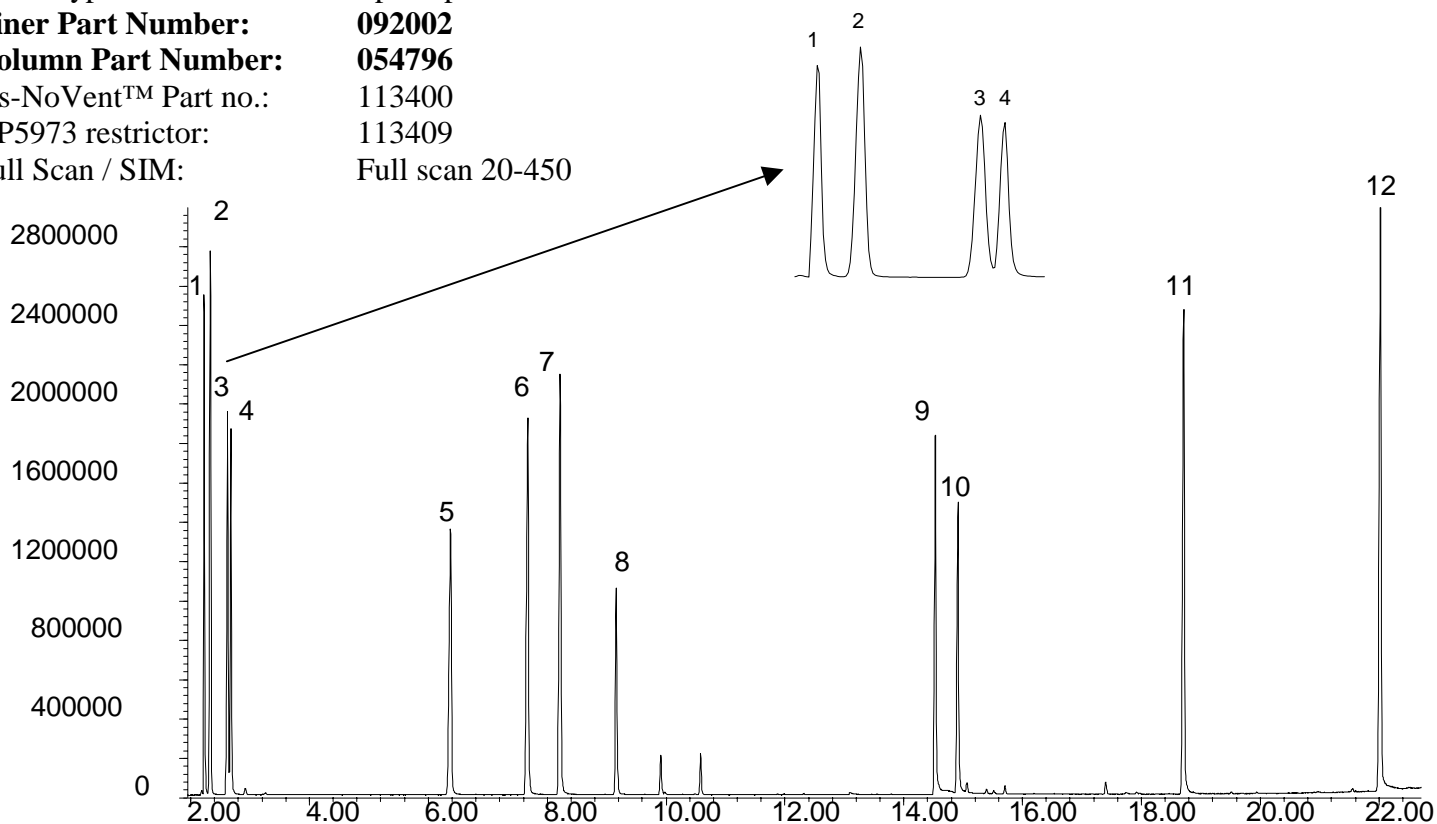
ALC 11 ALCOHOLS

Analysis of Branched Alcohols on SolGel-Wax™ with ms-NoVent

Phase: SolGel-Wax™, 0.25µm film
Sample: Neat solvent mixture
Column: 30m x 0.25 mm ID
Initial Temp: 40°C, 5 min.
Rate 1: 10°C/min to 230°C,
Final Temp: 230°C,
Detector Type: Mass Spectrometer
Carrier Gas: He, 33.14 psi
Carrier Gas Flow: 2.3 mL/min.
Constant Flow: On
Average Linear Velocity: 35 cm/sec at 40°C
Injection Mode: Split
Split Ratio: 100:1
Injection Volume: 0.1 µL
Injection Temperature: 250°C
Autosampler: No
Liner Type: Split/Splitless Focus Liner
Liner Part Number: 092002
Column Part Number: 054796
ms-NoVent™ Part no.: 113400
HP5973 restrictor: 113409
Full Scan / SIM: Full scan 20-450

Components

1. Methanol
2. *tert*-Butanol
3. *iso*-Propanol
4. Ethanol
5. *iso*-Butanol
6. *n*-Butanol
7. 2-Methoxyethanol
8. 2-Ethoxyethanol
9. Propylene glycol
10. Ethylene glycol
11. Diethylene glycol
12. Triethylene glycol



visit www.sge.com or contact our technical Customer Support Team on: techsupport@sge.com

SGE International Pty. Ltd.
email:support@sge.com

SGE Incorporated (USA)
email:usa@sge.com

SGE (France) Sarl
email:france@sge.com

SGE Deutschland GmbH
email:germany@sge.com

SGE Japan Inc.
email:sgejpn@itjit.ne.jp

SGE Australia Pty. Ltd.
email:sales@sge.com

SGE Europe Ltd. (UK)
email:uk@sge.com

SGE (Italia) Srl.
email:sge.italia@tin.it

SGE China Service Centre
email:sge@bj.col.com.cn

SGE India
email:sgeindia@bom4.vsnl.net.in