

Analysis of Phenols on BP20

KEYWORDS:

Phenols

Cresols

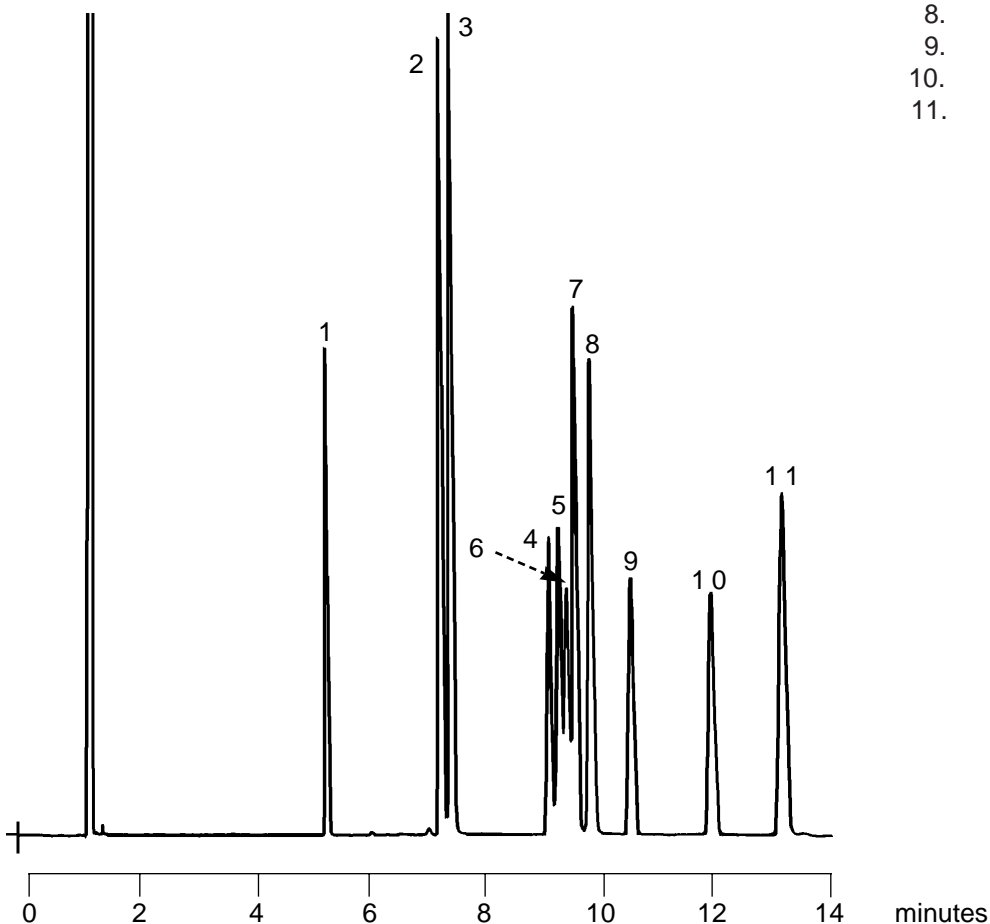
PHENOLS

Part No.: 054427
Phase: BP20, 0.25µm film
Column: 30m x 0.25mm ID
Initial Temp: Isothermal at 155°C
Detector: FID
Sensitivity: 32 x 10⁻¹² AFS
Injection Mode: Split

Notes: BP20 column completely resolves the three cresol isomers.

Components

1. 2,6-Xylenol
2. *o*-Cresol
3. Phenol
4. *o*-Ethylphenol
5. 2,5-Xylenol
6. *p*-Cresol
7. 2,4-Xylenol
8. *m*-Cresol
9. 2-iso Propylphenol
10. 2,3-Xylenol
11. 3,5-Xylenol + *p*-Ethylphenol



visit www.sge.com or contact our technical Customer Support Team on: techsupport@sge.com

SGE International Pty. Ltd.
email: support@sge.com
SGE Australia Pty. Ltd.
email: sales@sge.com

SGE Incorporated (USA)
email: usa@sge.com
SGE Europe Ltd. (UK)
email: uk@sge.com

SGE (France) Sarl
email: france@sge.com
SGE (Italia) Srl.
email: sge.italia@tin.it

SGE Deutschland GmbH
email: germany@sge.com
SGE China Service Centre
email: sge@bj.col.com.cn

SGE Japan Inc.
email: sgejpn@itjit.ne.jp
SGE India
email: sgeindia@bom4.vsnl.net.in