

ENV 11 ENVIRONMENTAL

Analysis of Chlorinated Hydrocarbons on BP5

KEYWORDS:

Chlorinated Hydrocarbons

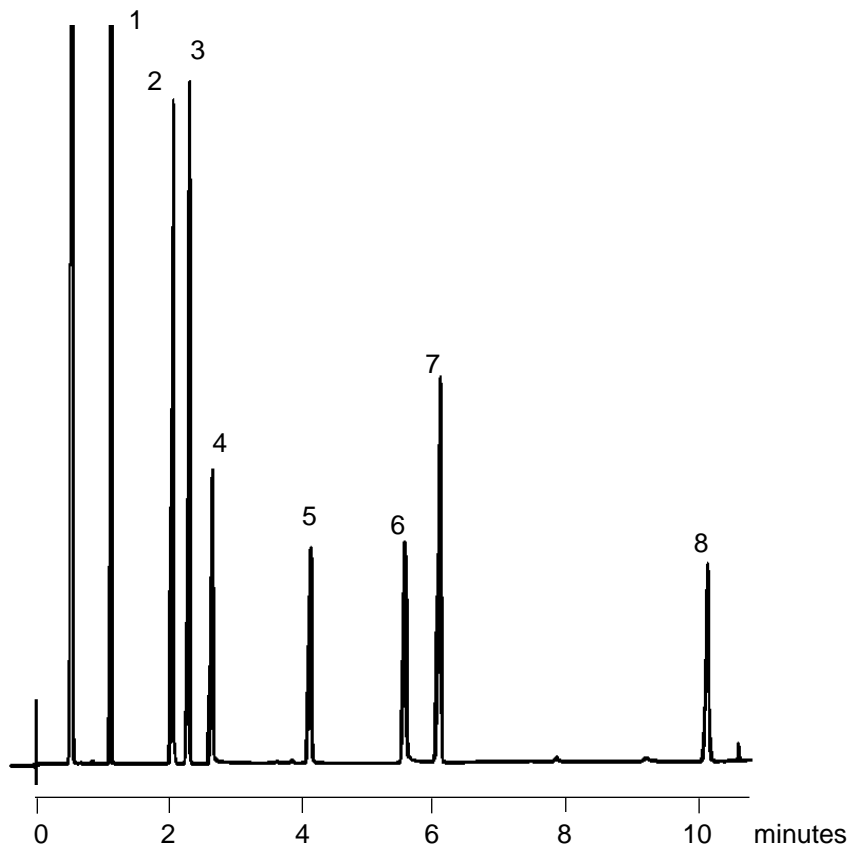
Chlorobenzenes

CHLORINATED HYDROCARBONS

Part No. 054197
Phase: BP5, 1.0µm film
Column: 12m x 0.53mm ID
Initial Temp: 85°C, 0 min
Rate: 10°C/min
Final Temp: 195°C, 0 min
Detector: FID
Sensitivity: 128 x 10⁻¹² AFS
Injection Mode: Split

Components

1. Chlorobenzene
2. 1,2-Dichlorobenzene
3. 1,3-Dichlorobenzene
4. Hexachloroethane
5. Hexachlorobutadiene
6. Hexachlorocyclopentadiene
7. 2-Chloronaphthalene
8. Hexachlorobenzene



visit www.sge.com or contact our technical Customer Support Team on: techsupport@sge.com

SGE International Pty. Ltd.
email: support@sge.com

SGE Incorporated (USA)
email: usa@sge.com

SGE (France) Sarl
email: france@sge.com

SGE Deutschland GmbH
email: germany@sge.com

SGE Japan Inc.
email: sgejpn@itjit.ne.jp

SGE Australia Pty. Ltd.
email: sales@sge.com

SGE Europe Ltd. (UK)
email: uk@sge.com

SGE (Italia) Srl.
email: sge.italia@tin.it

SGE China Service Centre
email: sge@bj.col.com.cn

SGE India
email: sgeindia@bom4.vsnl.net.in