

Analysis of 18 Chlorinated Pesticides on BPX608

KEYWORDS:

OCP's

Chlorinated Pesticides

Pesticides

Notes: Low bleed phase providing low detection levels. Specially prepared BPX35 column and tested using ECD.

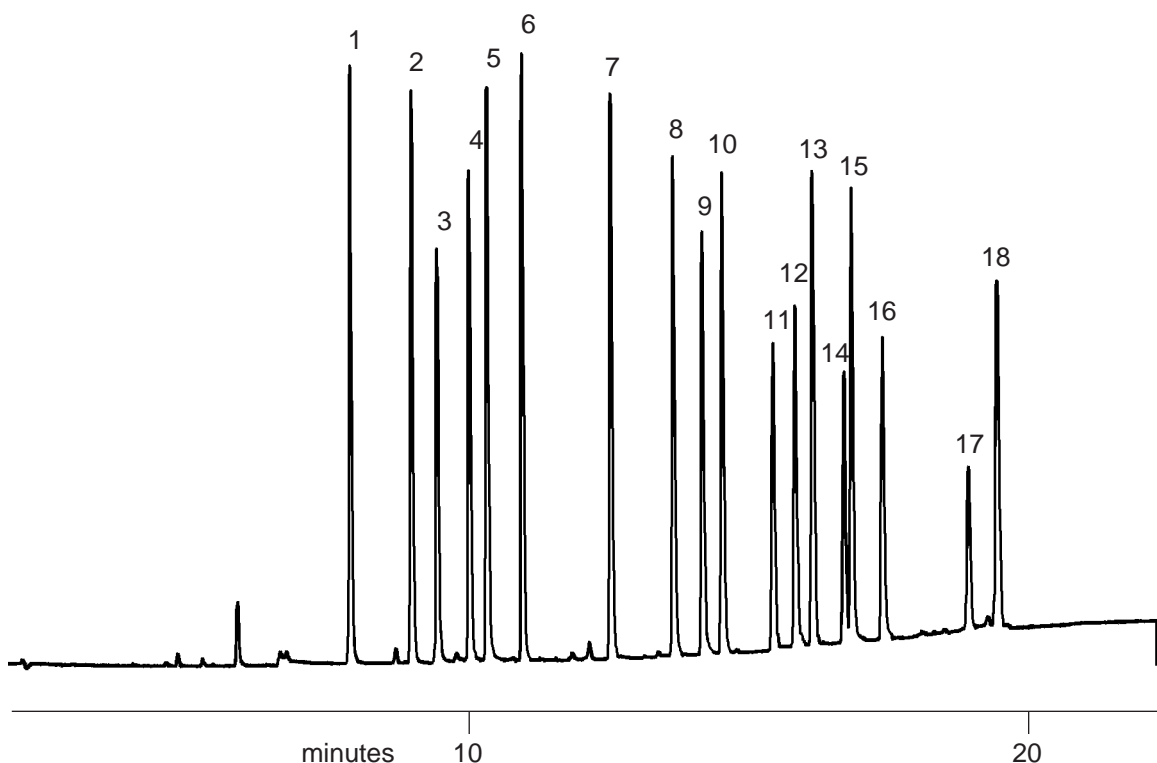
Components

20ng/μL each component

CHLORINATED PESTICIDES

Part No.: 054823
Phase: BPX608, 0.40μm
Column: 25m x 0.32mm ID
Initial Temp: 170°C
Rate: 7°C/min
Final Temp: 290°C
Detector: ECD
Injection Mode: Split (300:1)
Carrier Gas: He, 7 psi

- | | |
|----------------------------------|------------------------|
| 1. α-BHC | 10. Dieldrin |
| 2. γ-BHC | 11. Endrin |
| 3. β-BHC | 12. 4,4'-DDD |
| 4. Heptachlor | 13. Endosulfan II |
| 5. δ-BHC | 14. 4,4'-DDT |
| 6. Aldrin | 15. Endrin aldehyde |
| 7. Heptachlor epoxide (isomer B) | 16. Endosulfan sulfate |
| 8. Endosulfan I | 17. Methoxychlor |
| 9. 4,4'-DDE | 18. Endrin ketone |



visit www.sge.com or contact our technical Customer Support Team on: techsupport@sge.com

SGE International Pty. Ltd.
email: support@sge.com

SGE Incorporated (USA)
email: usa@sge.com

SGE (France) Sarl
email: france@sge.com

SGE Deutschland GmbH
email: germany@sge.com

SGE Japan Inc.
email: sgejpn@itjit.ne.jp

SGE Australia Pty. Ltd.
email: sales@sge.com

SGE Europe Ltd. (UK)
email: uk@sge.com

SGE (Italia) Srl.
email: sge.italia@tin.it

SGE China Service Centre
email: sge@bj.col.com.cn

SGE India
email: sgeindia@bom4.vsnl.net.in



Analysis of Chlorinated Pesticides

Notes: Extra low bleed, medium polarity BPX35 column is ideal for the analyses of EPA OCP's. BPX608 is a pesticide tested BPX35 column.

CHLORINATED PESTICIDES

Part No.: 054823
Phase: BPX608, 0,40 μ m
Column: 25m x 0.32mm ID
Initial Temp: 170°C
Rate: 7°C/min
Final Temp: 290°C
Detector: ECD
Injection Mode: Split (300:1)
Carrier Gas: He, 7 psi

Components

20ng/ μ L each component

- | | |
|----------------------------------|------------------------|
| 1. α -BHC | 15. Endrin aldehyde |
| 2. γ -BHC | 16. Endosulfan sulfate |
| 3. β -BHC | 17. Methoxychlor |
| 4. Heptachlor | 18. Endrin ketone |
| 5. δ -BHC | |
| 6. Aldrin | |
| 7. Heptachlor epoxide (isomer B) | |
| 8. Endosulfan I | |
| 9. Dieldrin | |
| 10. 4,4'-DDE | |
| 11. Endrin | |
| 12. 4,4'-DDD | |
| 13. Endosulfan II | |
| 14. 4,4'-DDT | |

